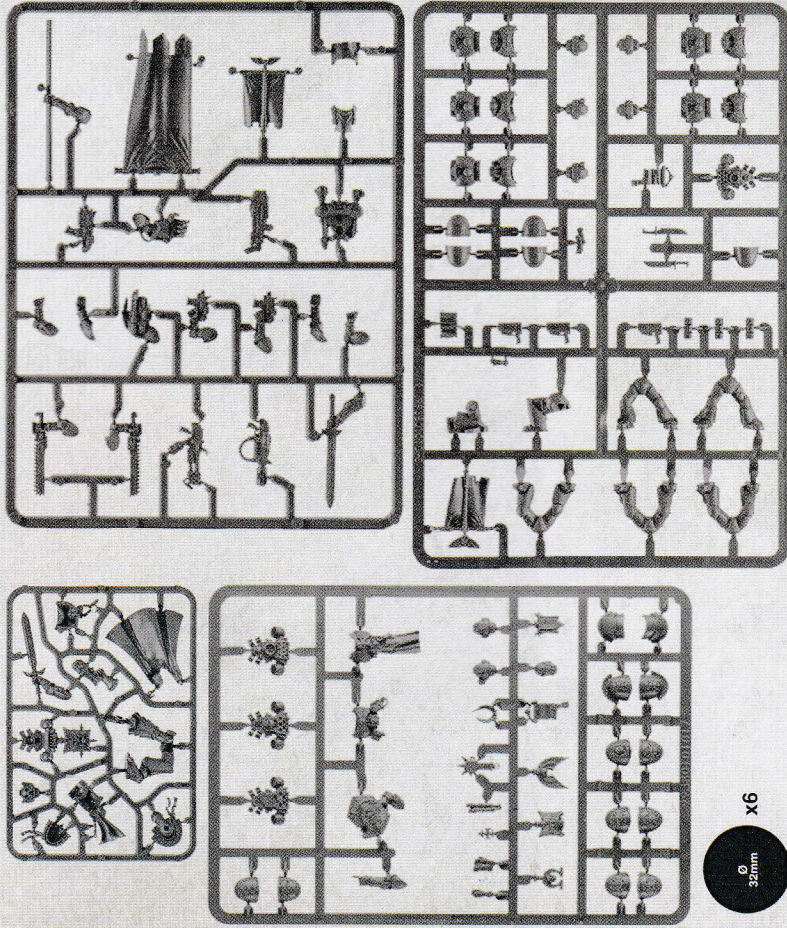


EXPLANATION OF SYMBOLS | EXPLICATION DES SYMBOLES | EXPLICACIÓN DE SÍMBOLOS
 ERLÄUTERUNG DER SYMBOLE | LEGENDA DEI SIMBOLI | アイコン解説 | 符号説明

- Variant assembly
 • Variante d'assemblage
 • Variante de montaje
 • Bauvariante
 • Assemblaggio alternativo
 • 組み立てバリエーション
 • 多种组装方式
- Choice of parts
 • Choix delements
 • Modelos de componentes
 • Auswahl an Teilen
 • Scelta di componenti
 • パーツの選択
 • 选择部件
- Repeat process
 • Répéter l'étape
 • Repetir pasos
 • Vorgang wiederholen
 • Ripeti il processo
 • 同じ作業を繰り返すこと
 • 重复步骤

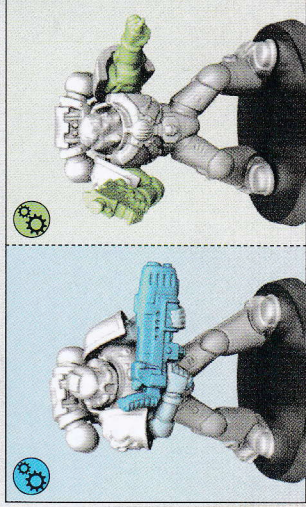
CONTENTS | CONTENUTO | INHALT | CONTENUTO | コンテンツ | 内含板件



ø 32mm x6

BUILD VARIANTS | VARIANTES D'ASSEMBLAGE | MONTA TERNATIVOS | BAUVARIANTEN
 VARIANTI D'ASSEMBLAGGIO | バリエーション | 変体版

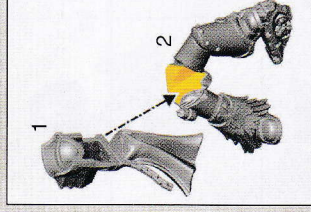
- Assemblies for build variants are colour coded.
 • Les assemblages de variantes ont un code couleur.
- Las instrucciones para montajes alternativos se indican con un color diferente.
- Optionen für Bauvarianten sind farblich markiert.
- Le diverse varianti d'assemblaggio sono divise per colore.
- バリエーション連いの組み立ては色分けされている。
- 変体版拼装部件有颜色区分。



1 CAPTAIN

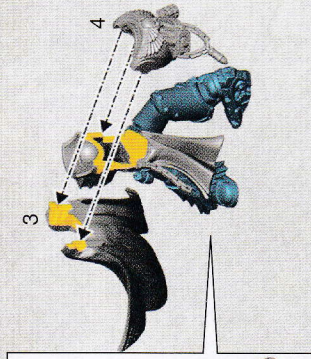
CAPTAINNE | CAPITÁN | CAPTAIN | CAPITANO | キャプテン | 隊長

1 a



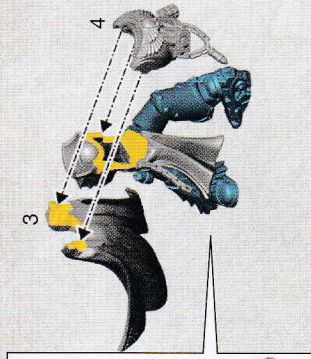
1

2



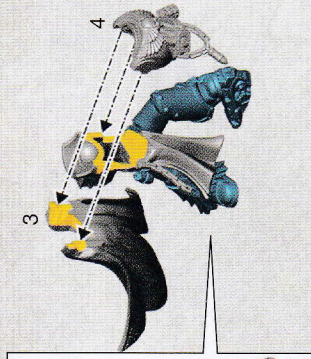
3

4



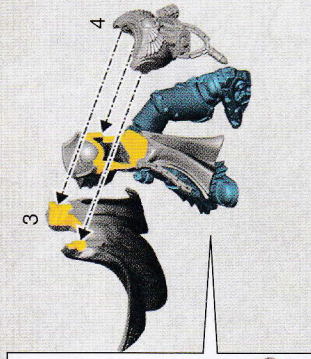
5

6



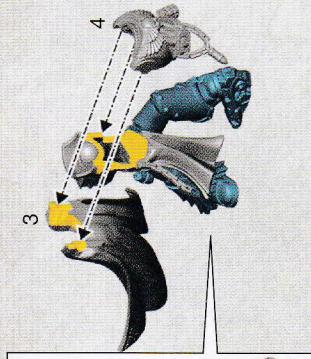
7

8

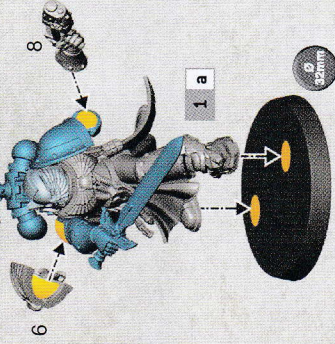


9

10



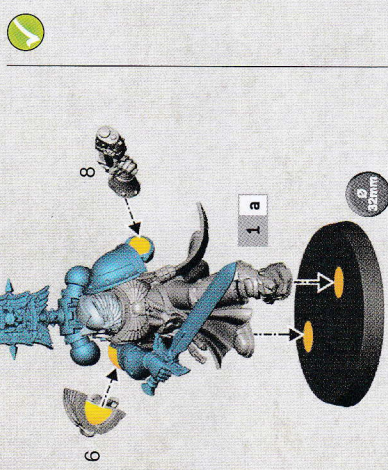
1 a



6

8

1 a

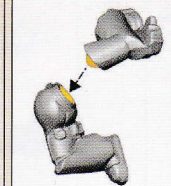
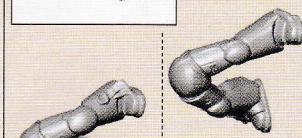
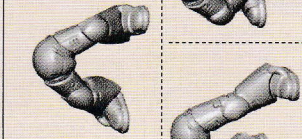


ø 32mm

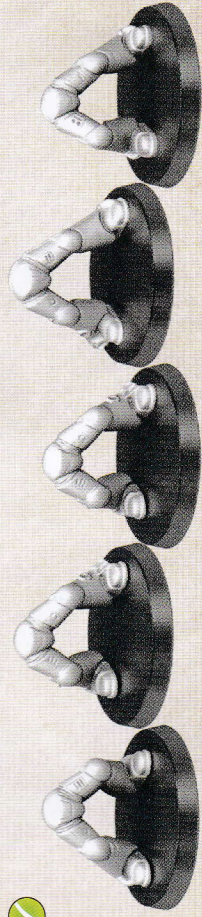
2 Interchangeable parts

ELEMENTS INTERCHANGEABLES | PARTES INTERCAMBIABLES | AUSTAUSCHBARE TEILE
 COMPONENTI INTERCAMPBILI | 組み換え可能な部品 | 可互換零件

2 a x5



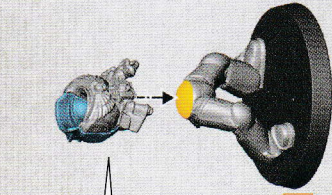
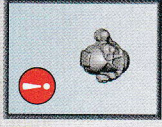
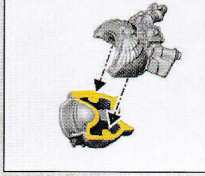
ø 32mm



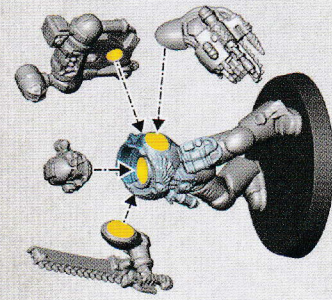
4 APOTHECARY

APOTHECAIRE | APOTECARIO | APOTECARIO | アポセカリー | 薬剂師

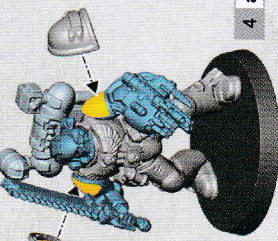
4 a



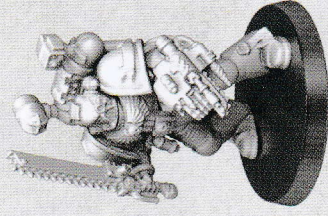
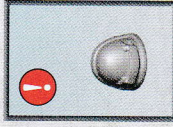
2 a



4 b



4 a



2 b



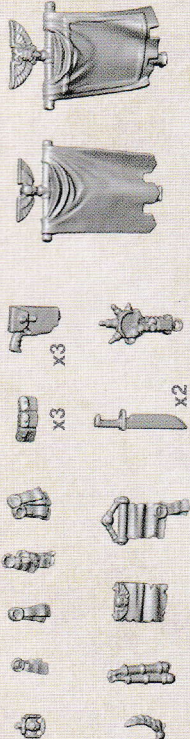
2 c



2 d



2 e

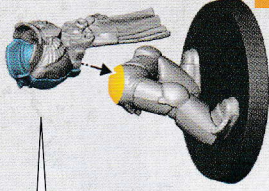
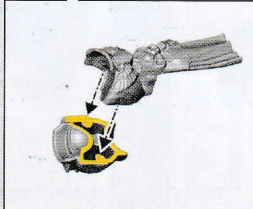


3 COMPANY CHAMPION

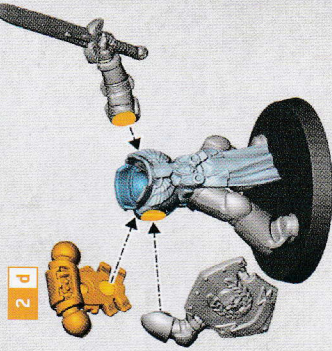
CHAMPION DE COMPAGNIE | CAMPEÓN DE LA COMPAÑÍA | KOMPANIECHAMPION

CAMPIONE DELLA COMPAGNIA | カンパニーチャンピオン | 連队勇士

3 a

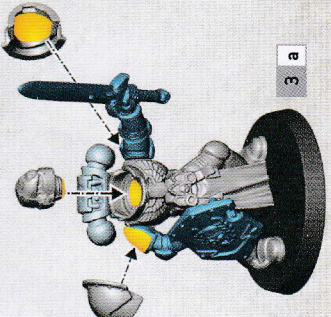
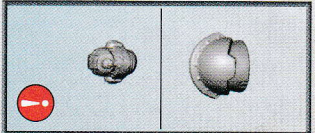


2 a

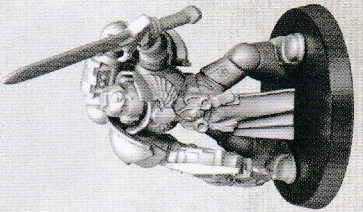


2 d

3 b



3 a

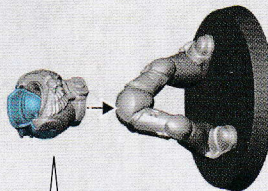
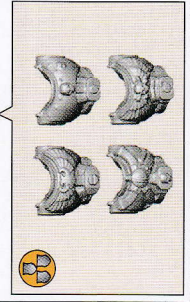


5 COMPANY ANCIENT

DOYEN DE COMPAGNIE | ANCIANO DE LA COMPAÑÍA | KOMPANIESTANDARTENTRÄGER

ANTICO DELLA COMPAGNIA | カンパニー-エイジエント | 連队旗手

5 a



2 a

5 b

